

**320454(20)**

**B. E. (Fourth Semester) Examination, April-May 2020**

**(New Scheme)**

**(Civil Engg. Branch)**

**CIVIL ENGINEERING DRAWING**

***Time Allowed : Four hours***

***Maximum Marks : 80***

***Minimum Pass Marks : 28***

***Note : Attempt all questions. Part (a) from each question is compulsory. Attempt any two parts from parts (b), (c) and (d).***

**Unit-I**

1. (a) What do you understand by Elegance? 2
- (b) Write the site selection requirement of a canteen. 7

[ 2 ]

- (c) Write the municipal regulations and by laws for residential buildings. 7
- (d) Explain the following terms : 7
- (i) Roominess
  - (ii) Aspect
  - (iii) Privacy
  - (iv) Economy

**Unit-II**

2. (a) What do you understand by single line plan? 2
- (b) Draw a single line plan of a canteen. 7
- (c) Draw a plan of 1 BHK. 7
- (d) Draw a line plan of primary health centre. 7

**Unit-III**

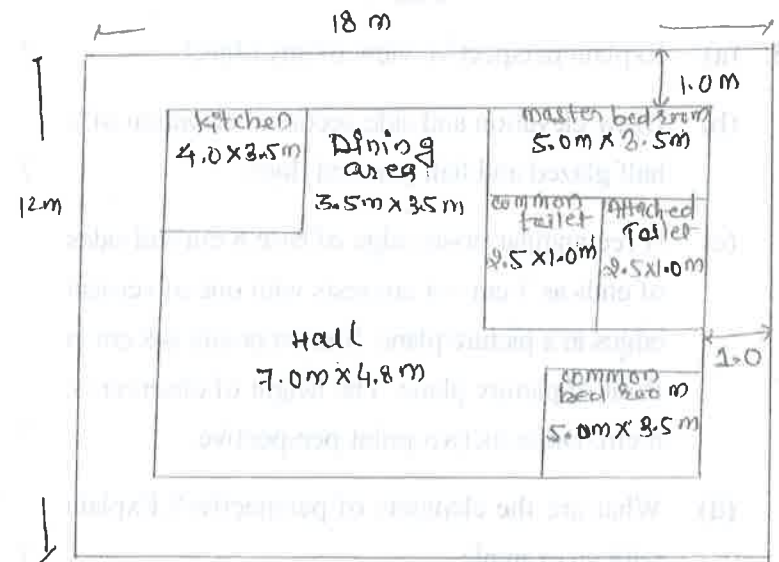
3. (a) What do you mean by front elevation of a building? 2
- (b) Draw the front elevation of 1 BHK which is given in question no. unit-II(c). 7
- (c) Draw the plan and elevation of primary school. 7

[ 3 ]

- (d) Draw the line plan of hostel for 50 students and draw its elevation. 7

**Unit-IV**

4. (a) Define "Plinth area". 2
- (b) Draw the plan showing all details for a building of which line plan is given in figure and draw its sectional view. 14



- (c) Using suitable scale draw the plan for a single storey residential building with the following requirements : And draw its sectional view
- (i) Plot size = 20 m × 18 m
  - (ii) Two bed rooms = 4 m × 5 m
  - (iii) One living room = 7 m × 6 m
  - (iv) Kitchen = 3 m × 3.5 m
  - (v) Front and rear verandah = 2.5 m wide 14

### Unit-V

5. (a) Explain perspective view of any object. 2
- (b) Draw elevation and side sectional elevation of a half glazed and half paneted door. 7
- (c) A rectangular prism edge of base 8 cm and sides of ends as 3 cm × 4 cm rests with one of vertical edges in a picture plane. Station points is 8 cm in front of picture plane. The height of observer is 6 cm. Draw its two point perspective. 7
- (d) What are the elements of perspective? Explain with an example. 7